

Observation:

Our small screen Digital Photo Frame normally evoke itself with the built-in software for the Photo Viewer Tool (current version is v3.0) once connected to the computer notwithstanding the Windows, Mac or Linux. Unless the computer's operating system is in older version or it has not been configured with the Plug N Play feature, manual installation of our Photo Viewer Tool is required, either by using the accompanied disc or downloading from our Tech Issues on website, <http://lucasind.com/techissues.htm>.

Getting started:

Switch on – push the Main (Enter, or OK, or the Centre button whichever it appears on the unit)

Menu screen – push the Main again (when the unit is on, i.e. displaying status)

Power Off (Shut down)

Slide Set (Selectable options for time interval breaks, from seconds to minutes)

Clock Set (Setting time)

Auto On/Off (This is for energy saving when the unit is in idle status)

Show Clock (The time will be shown on the corner of the screen)

Exit (Leave the menu screen)

Switch off – push the Main for a longer while (when the unit is on, displaying status)

A) Battery charging - The unit can be charged either via USB energy or Direct AC power. An USB power adaptor is supplied in the accessory kit, simply by connecting unit with the USB cord.

1. A pop-up screen will show
 - ✧ USB Charge
 - ✧ USB Update
2. To recharge the battery, leave it there. For the 1st and 2nd time charging, please charge for longer hours, i.e. 2~3hours. The battery will perform long enough if it is properly maintained and charged.
3. When pushing the Main, it will display the stored photos automatically in an auto-slide mode.

B) Photo transfer -

1. Connect the unit with the computer via the USB cord.
2. A pop-up screen will show
 - ✧ USB Charge
 - ✧ USB Update
3. Select the USB Update by pushing the Selection button (up or down/right or left). Then push the Main button. The unit will now in a linked status with the computer, and is ready for transfer.

Lucas Industries Limited
 Small Screen (1.1", 1.5", 2.5" screen) Photo Frame series
 Photo Viewer tool v.3.0
Operating guide

C) Operating the Photo Viewer tool: Transfer photos from computer to the unit

1. When the unit is connected and is in linked status with the computer, click the icon or the shortcut of Photo Viewer, a screen is shown like this:

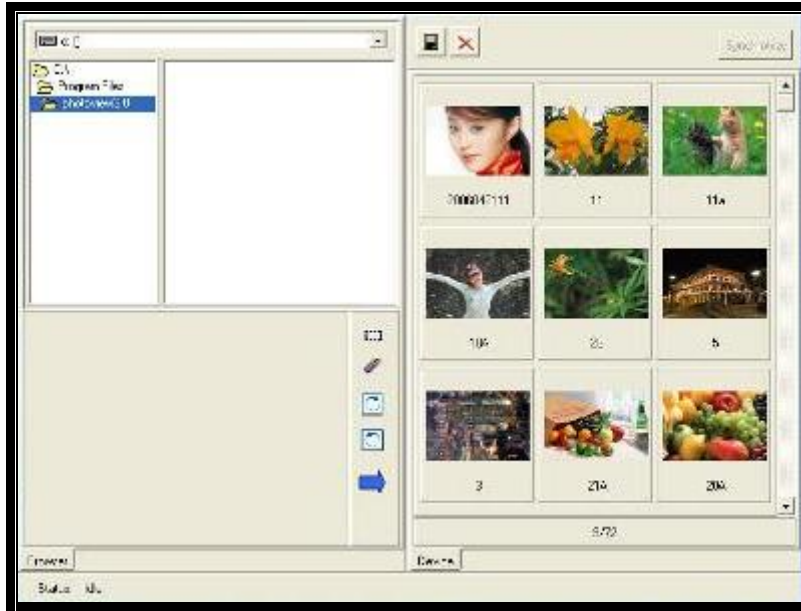


Diagram 1

If the unit is not connected well in linked status, or the computer does not recognize the USB plug-in, redo again until the computer taskbar display a new device is found, the Photo Viewer tool will not function at all.

1. On the top left of the Photo Viewer, select the drive and the folder where the source of the photos to be transferred to the unit.

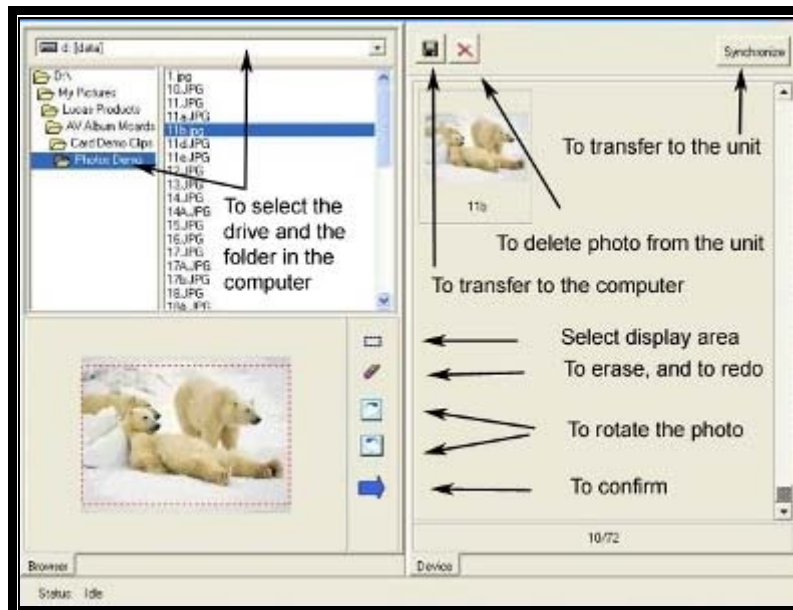


Diagram 2

Lucas Industries Limited
Small Screen (1.1", 1.5", 2.5" screen) Photo Frame series
Photo Viewer tool v.3.0
Operating guide

2. Choose the desired photo, it will appear at the bottom left of the Photo Viewer.
3. Use the editable tabs, as shown on the diagram above to create best fit output display.

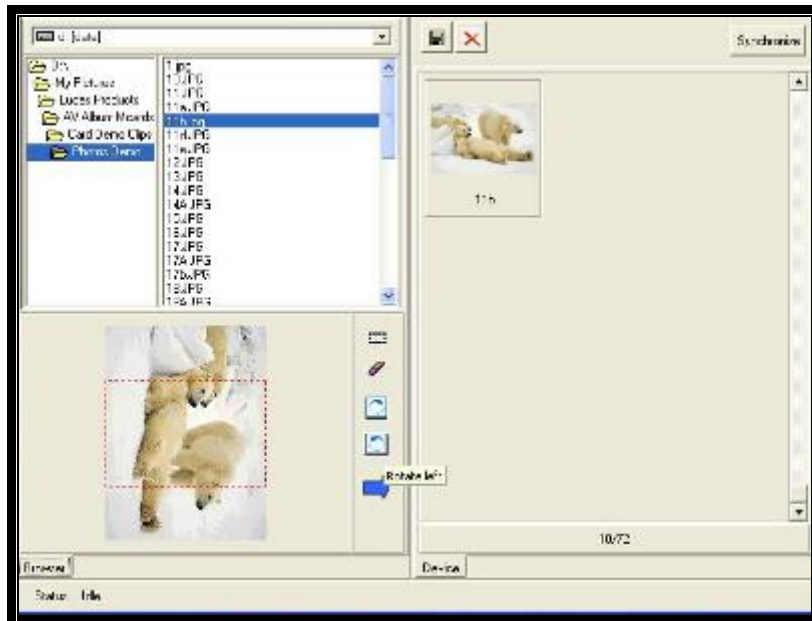


Diagram 3

4. To confirm tab will transfer the photo to the right of the Photo Viewer. Repeat these steps if there are more desirable photos to be transferred to the unit. Then click the Synchronize tab to complete the transfer. If transfer is successful, there will be a confirmation message. If not, re-start the whole aforesaid edition process.

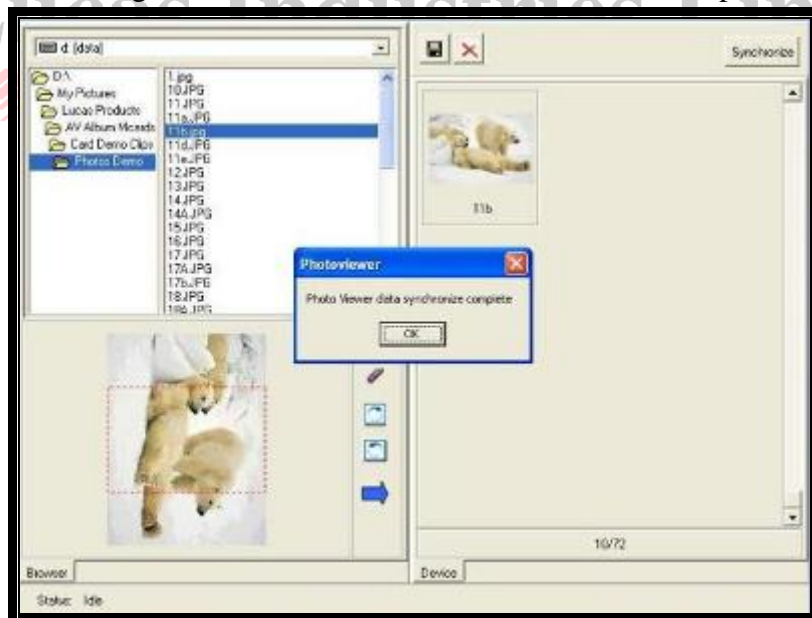


Diagram 4

Lucas Industries Limited
Small Screen (1.1", 1.5", 2.5" screen) Photo Frame series
Photo Viewer tool v.3.0
Operating guide

6. The right of Photo Viewer will now display all the photos transferred and stored inside the unit.

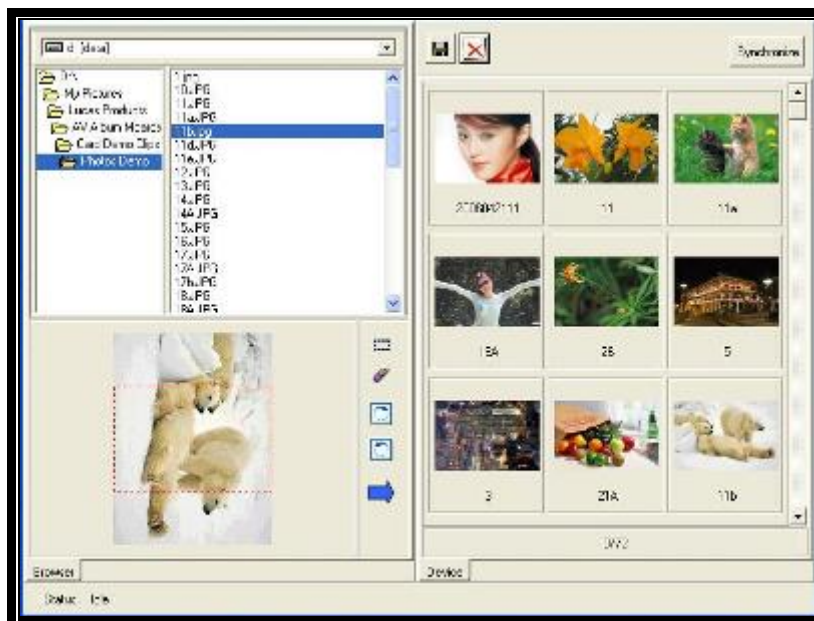


Diagram 5

D) Operating the Photo Viewer tool: Transfer photos from the unit to the computer

Please refer to Diagram 2,

To select the drive and the folder to be stored with the photos from the unit, click the 'To transfer to the computer' tab. The file name of the photo will display on the left of the Photo Viewer. Continue with these steps until the chosen photos have been transferred, click the 'Synchronize' tab to complete.

E) Operating the Photo Viewer tool: Delete photos from the unit

Please refer to Diagram 2,

To select the target photos on the right of the Photo Viewer, click the 'To delete photo from the unit' tab, the subject photo will disappear. Continue with these steps until the chosen photos have been deleted, click the 'Synchronize' tab to complete.

F) Operating the Photo Viewer tool: Exit

Unplug the USB cord, the unit will resume to its normal display status.